

**Johnathan Mack**

**IT315**

**Hands on 9**

## **1. IP Address**

The IP address of it315.girlsgeekout.org is 216.92.30.104. This was identified using the DNS filter in Wireshark and locating the “Standard Query Response” packet.

---

## **2. GET Command**

The GET request could not be captured because the website forces HTTPS instead of HTTP. Since HTTPS encrypts all traffic, the GET request is not visible in Wireshark.

---

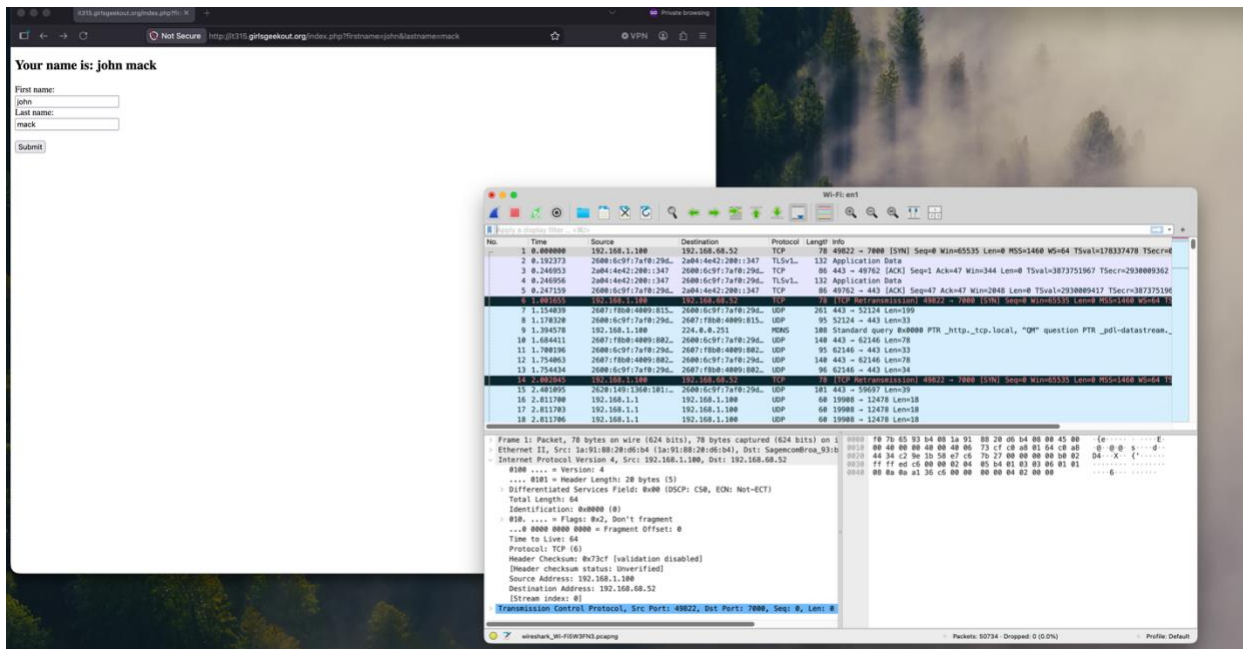
## **3. Server Response**

The server response could not be viewed in plain text due to HTTPS encryption. Normally, the response would appear as “HTTP/1.1 200 OK” and contain HTML data, but encryption prevents the contents from being readable.

---

## **4. Why Encryption is Important**

Encryption is important because it protects sensitive data from being intercepted. In this capture, the traffic is encrypted, preventing information such as names from being viewed. Without encryption, this data would be visible in plain text and could be captured by attackers.



ideos on YouTube that explain it, like this one:

OR:

IS:

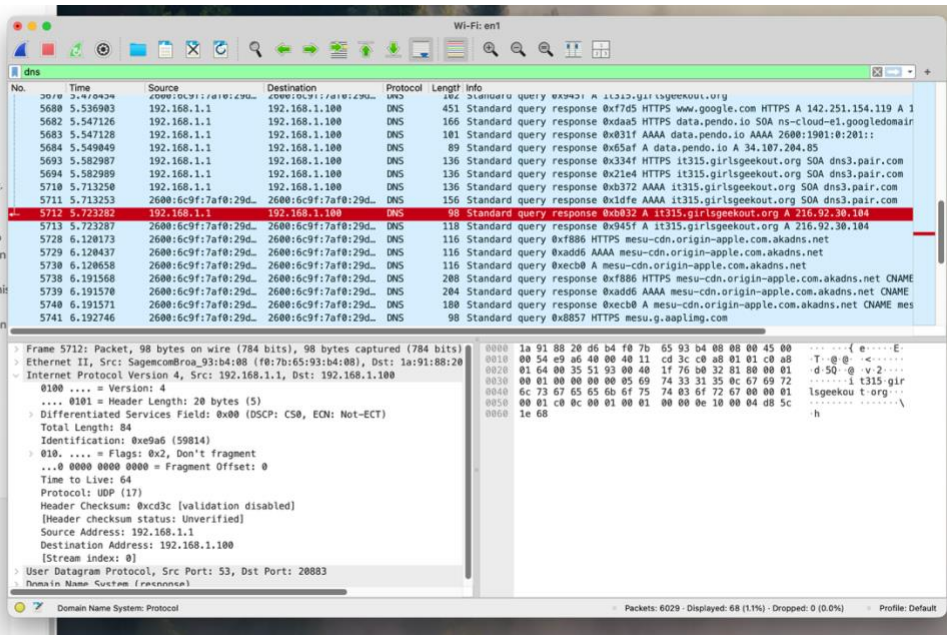
ays "Standard Query Response" for it315.girlsgeekout.org.

lot of entries, try the filter "dns.a" or

girlsgeekout.org to limit the display to show only traffic to our  
 operation sent a GET command with your name in  
 it it knows your first and last name?

"HTTP/1.1 200 OK). What type of data is contained in this

It important to have network traffic encrypted rather than



Webcam Photo