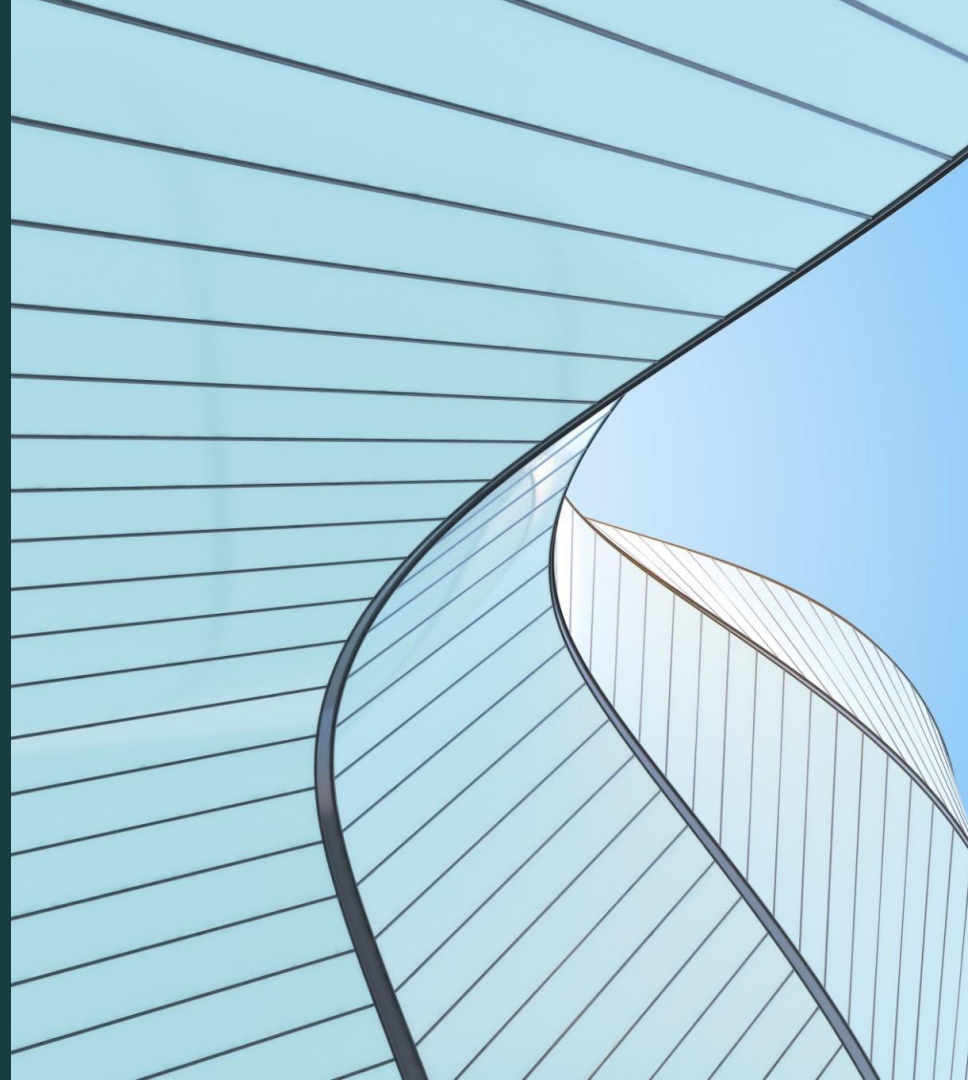


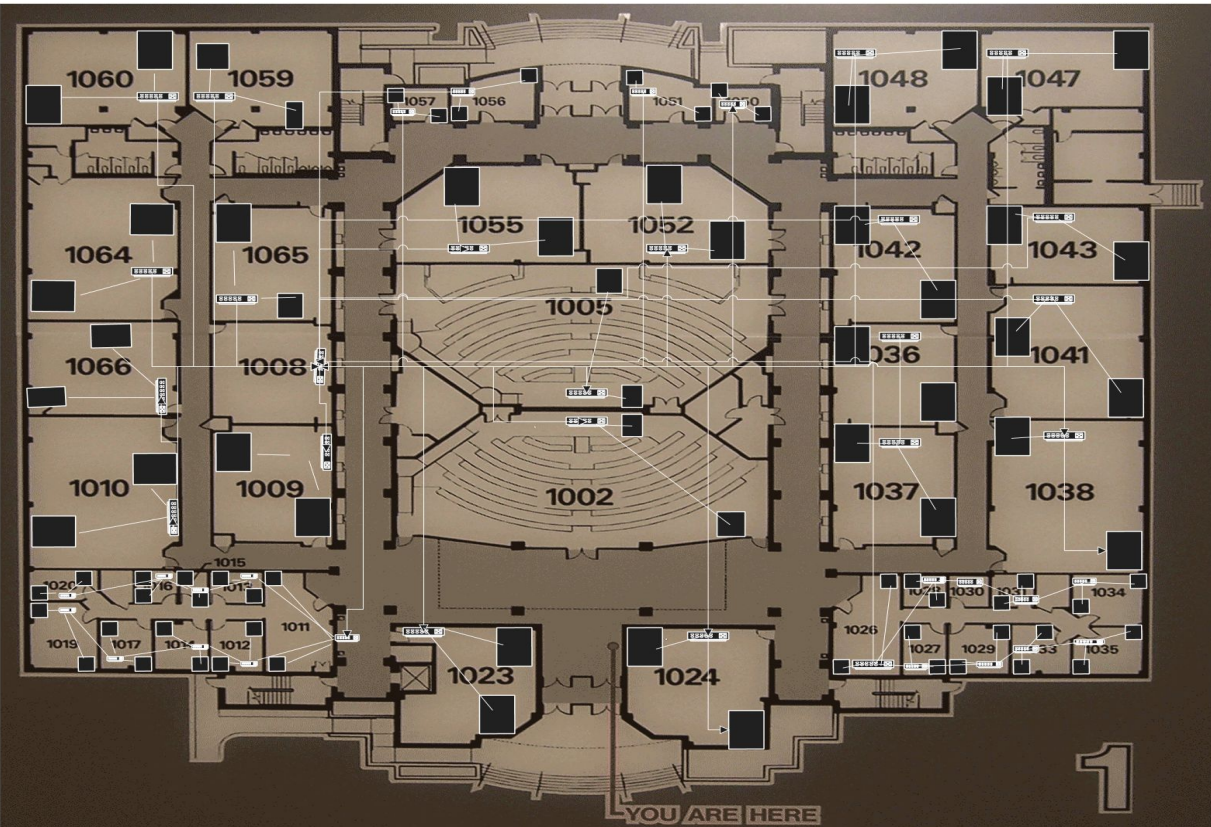
India Henry
CYSE495 - 31242
Prof. Charles Kirkpatrick
March 8, 2026

Wiring Constant Hall

This presentation will show a diagram of the two floors in Constant Hall and includes the proposed wiring plan for each floor. The first and second slides show a diagram of each floor, a legend, and an explanation for the proposed plan. The third and fourth slides show a cost breakdown for each floor, and the fifth slide shows the price for the whole project.



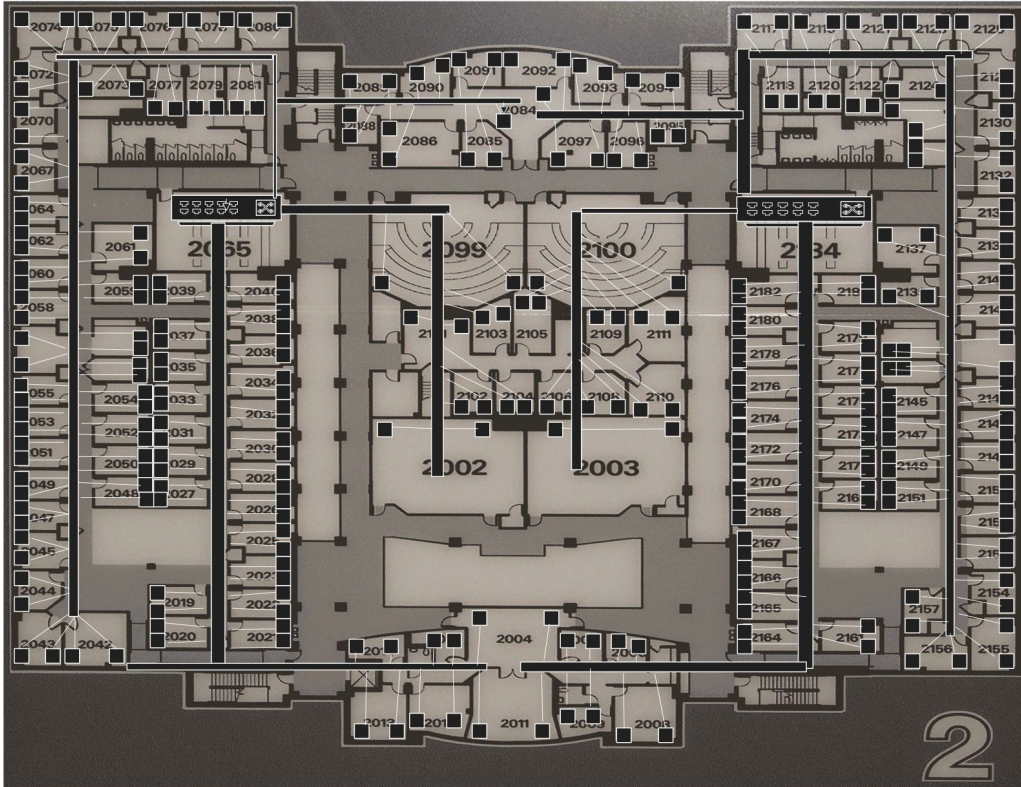
Constant Hall Floor 1



- Extended Star Topography
- Equipment Room = Room 1008
- Telecommunications Room = Room 1030
- 1 inch = 11 meters
- Black boxes = outlets

The first floor is proposed as an extended star because the rooms are bigger and can have a switch that connects each the central room; this also creates redundancy and can be extended in the future.

Constant Floor 2



- Star Topography
- Rooms 2065 and 2134 are equipment rooms
- Black boxes = outlets
- Black rectangles = 2 cables
- White lines = connections to outlets

For the second floor, star topography is used because the rooms are smaller and running a direct connection from the equipment rooms would be more efficient than putting a switch in each room.

First Floor Budget

Materials	Amount Needed	Price per Product	Total Price
<u>Outlets with faceplates</u>	92	~ \$5.00	~\$460.00
<u>CAT-5 Cables 100ft</u>	24	~ \$12.00	~ \$288.00
<u>48 Port Patch Panels</u>	2	~ \$87.00	~ \$174.00
<u>Switch</u>	48	~ \$19.00	~ \$912.00
<u>Router</u>	2	~ \$70.00	~ \$140.00
			~ \$1,974.00

Second Floor Budget

Materials	Amount Needed	Price per Product	Total Price
<u>Outlets with faceplates</u>	298	~ \$5.00	~ \$1,490
<u>CAT-5 Cables 100ft</u>	24	~ \$12.00	~ \$288.00
<u>48 Port Patch Panel</u>	7	~ \$87.00	~ \$609.00
<u>Switch</u>	25	~ \$19.00	~ \$475.00
<u>Router</u>	2	~ \$70.00	~ \$140.00
			~ \$3,002.00

Total Budget

Materials	Amount Needed	Price of Product	Total Price
<u>Outlets with Faceplates</u>	390	~ \$5.00	~ \$1,950.00
<u>CAT-5 Cables (100ft)</u>	~ 60	~ \$12.00	~ \$720.00
<u>48 Port Patch Panels</u>	9	~ \$87.00	~ \$783.00
<u>Switch</u>	73	~ \$19.00	~ \$1,387.00
<u>Router</u>	4	~ \$70.00	~ \$280.00
			~ \$5,120.00