

Key for Diagrams



Fiber Connection



1 Port



2 Ports



3 Ports



6 Ports



Switch



Router



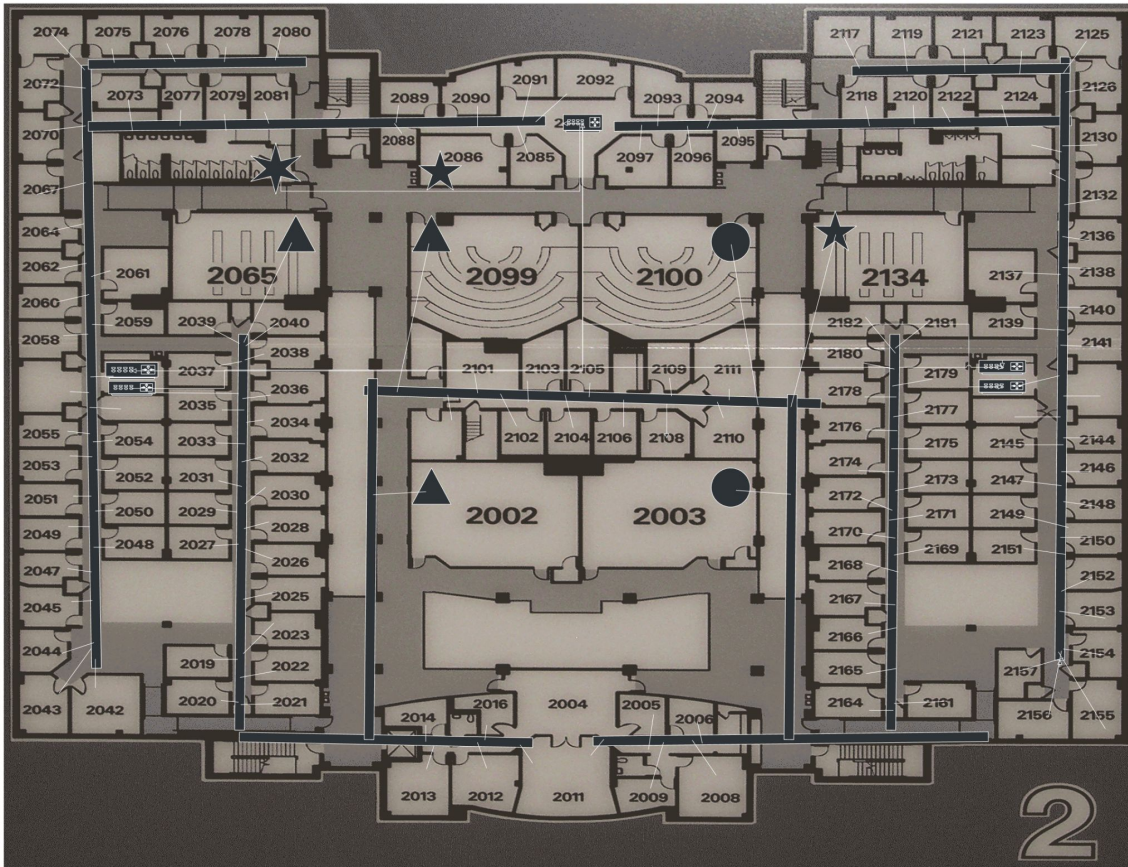
Server

Floor 1



- **Telecommunication Closet = Room 1055**
- 5 switches
- 1 router
- 3 servers
- 1 Fiber Connection
- 11 Computer Labs
 - 1009, 1008, 1065, 1052, 1042, 1036, 1037, 1023, 1024 have 12 ports each
 - 1002 and 1005 have 24 ports each
- 10 Classrooms
 - 1010, 1064, 1048, 1043, 1038 = 3 ports
 - 1066, 1060, 1059, 1047, 1041 = 2 ports
- 24 MBA/Advising Offices

Floor 2



- Telecommunication Closets = Un-numbered offices across from 2145 and 2054
- 4 switches
- 1 router
- 1 fiber connection
- 3 classrooms on the east wing
 - 2100 and 2003 = 2 ports
 - 2134 = 1 port
- 4 classrooms on the west wing
 - 2065, 2099, and 2002 = 3 ports
 - 2086 = 1 port
- Offices use direct connection using star topography

Final Costs



Item	Cost	Amount	Total Cost
<u>48- Port Switch</u>	\$379.00	9	\$3,411.00
<u>Router</u>	\$114.00	2	\$288.00
<u>Outlets with faceplates</u>	\$6.00	375	\$2,250.00
<u>Server</u>	\$450.00	3	\$1,350.00
<u>Cat-5 Cables</u>	\$12.00	~ 60	~ \$720.00
<u>400 ft, LC to LC, Pulling Eye Both Ends Fiber</u>	\$776.00	1	\$776.00
			~ \$8,795.00