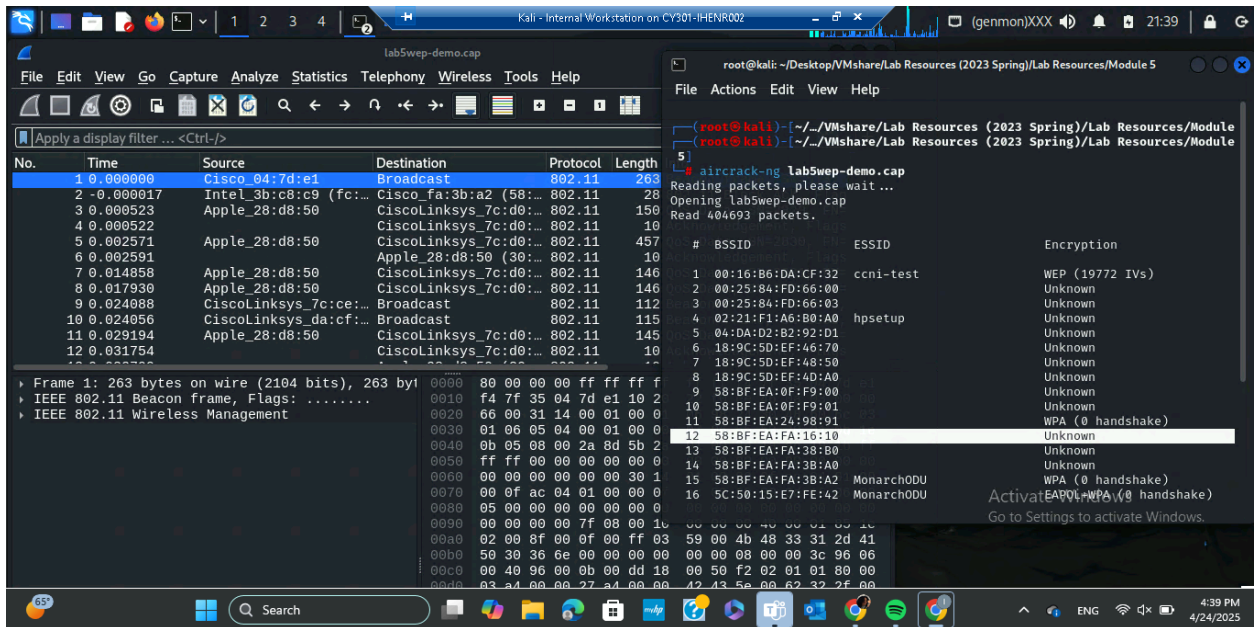


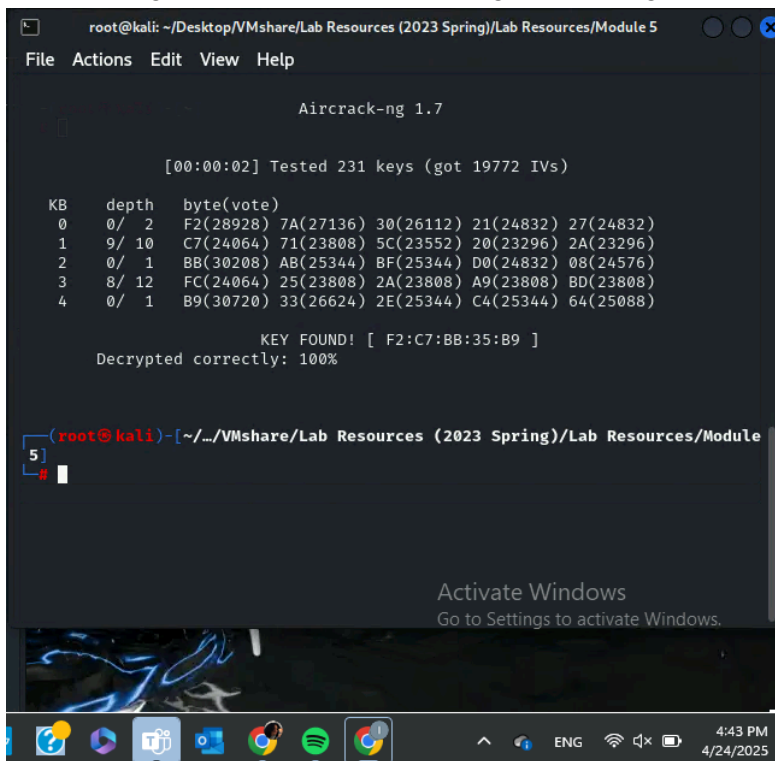
Task C: Wifi password cracking

Follow the steps in the lab manual, and practice cracking practice for WEP and WPA/WPA2 protected traffic.

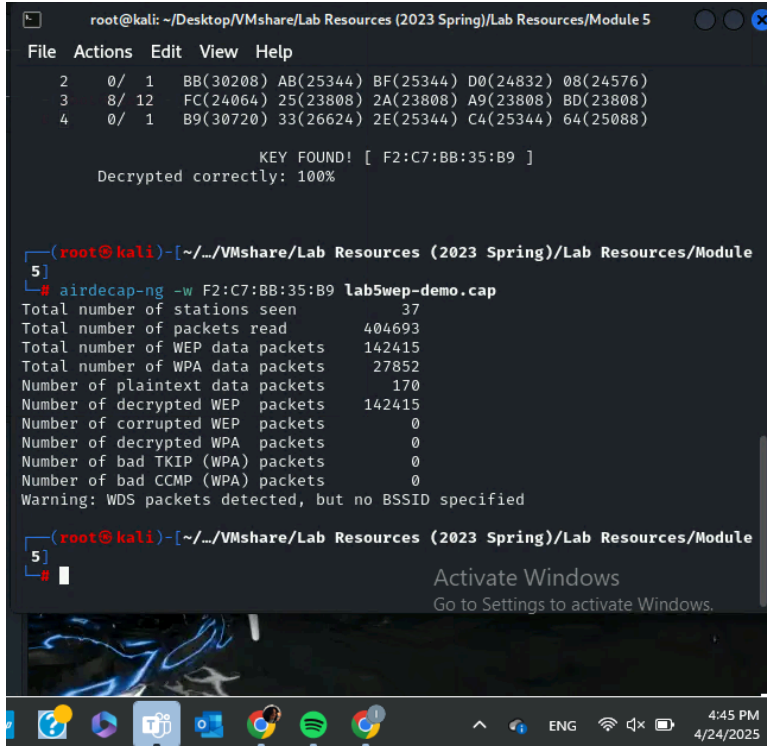
1. Decrypt the lab4wep.cap file and perform a detailed traffic analysis



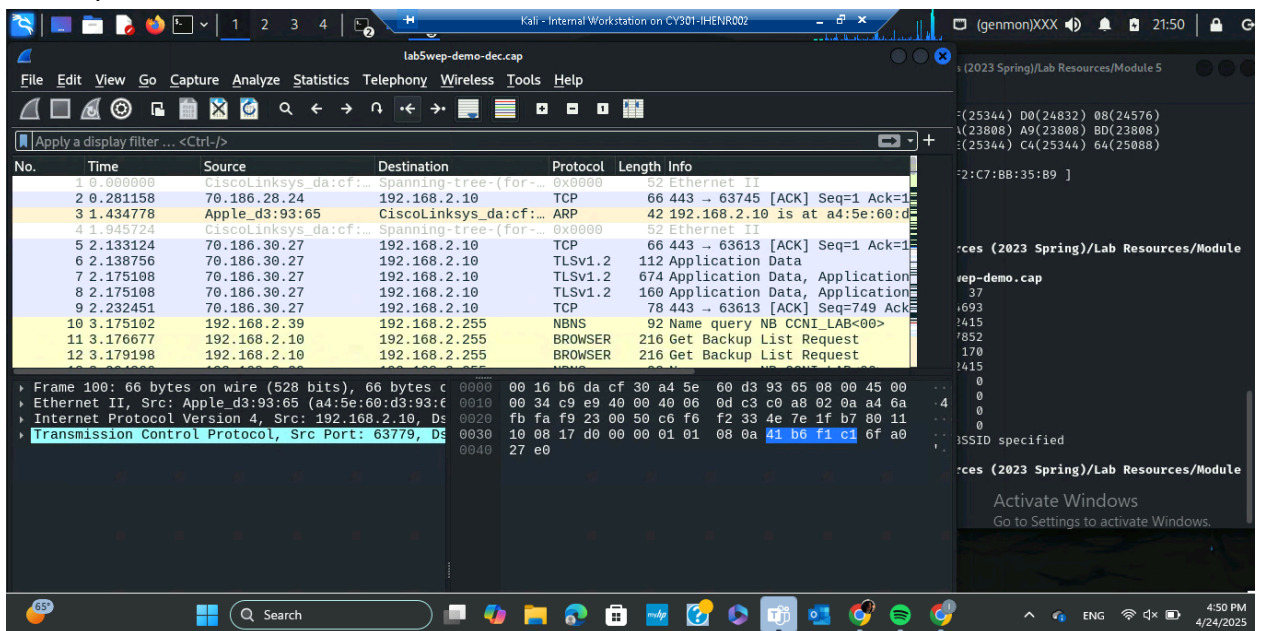
Open Vmshare; click lab resources spring 2023; click lab resources; open terminal using module 5 folder; open lab 5 folder and open lab5wep-demo.cap wireshark; in the terminal target wep network after using aircrack-ng command.



Choose target 1 for WEP; got the key



Execute airdecap command to decrypt the data in lab5wep file using the key found in the last step



Go back to lab 5 file; click the lab5wep-demo-dec.cap file which takes you to wireshark

What opens is a decrypted traffic analysis that shows how the packets interact with each other; from here we look at any patterns or requests that seem abnormal.